



1 DORMITORIO

IAP_02

BAJA

SUPERFICIES CONSTRUIDAS

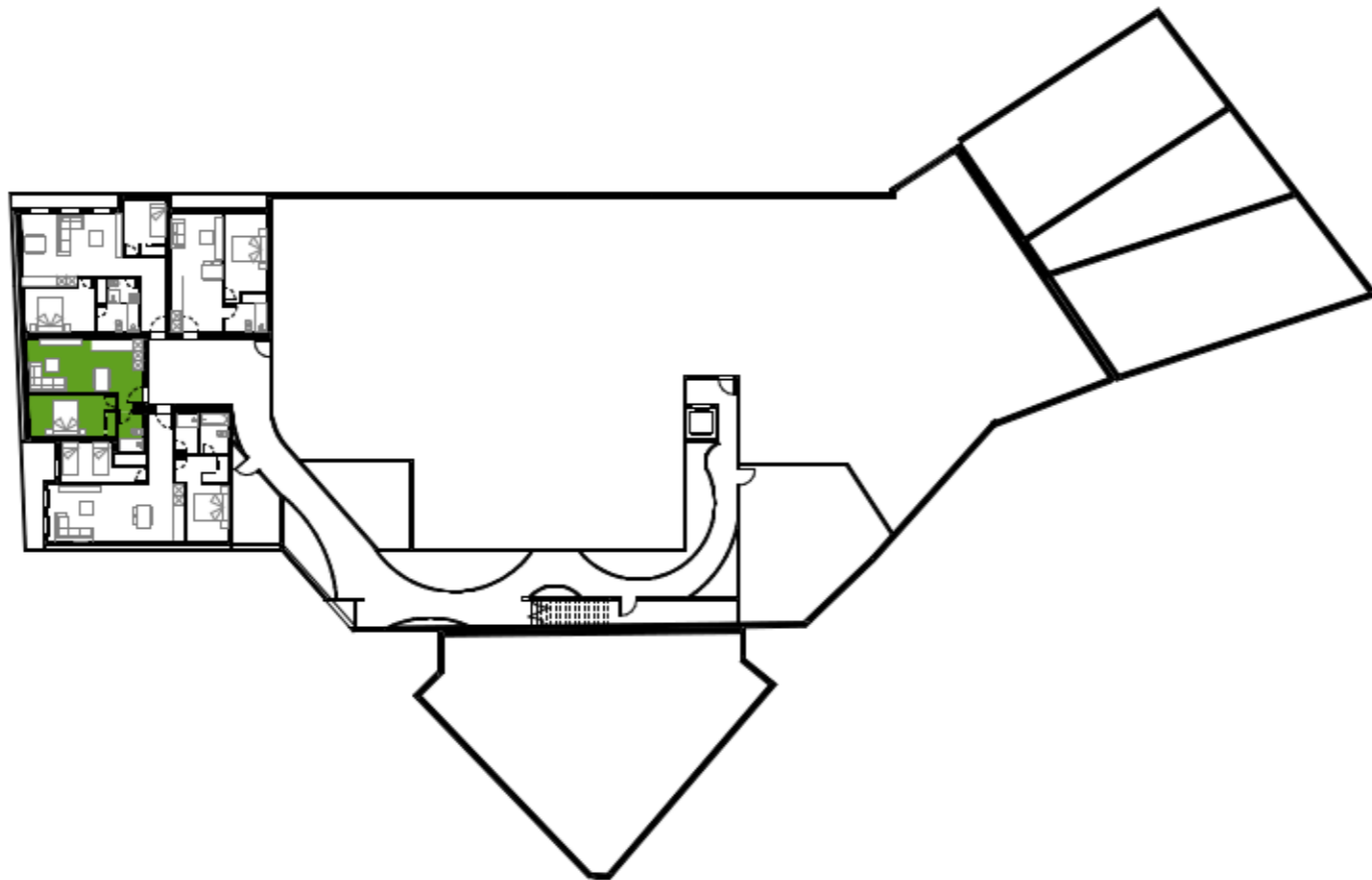
TOTAL CONSTRUIDA	50.79 m ²
------------------	----------------------

TOTAL CONSTRUIDA + TERRAZAS	50.79 m ²
-----------------------------	----------------------

SUPERFICIES ÚTILES

TOTAL ÚTIL	
------------	--

Salón- Cocina	22.43 m ²
Dormitorio Ppal	12.59 m ²
Baño Ppal	3.51 m ²
Viv. Interior	38.53 m ²



*NOTA: