



2 DORMITORIO

IA_P_03

BAJA

SUPERFICIES CONSTRUIDAS

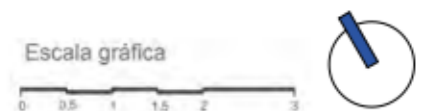
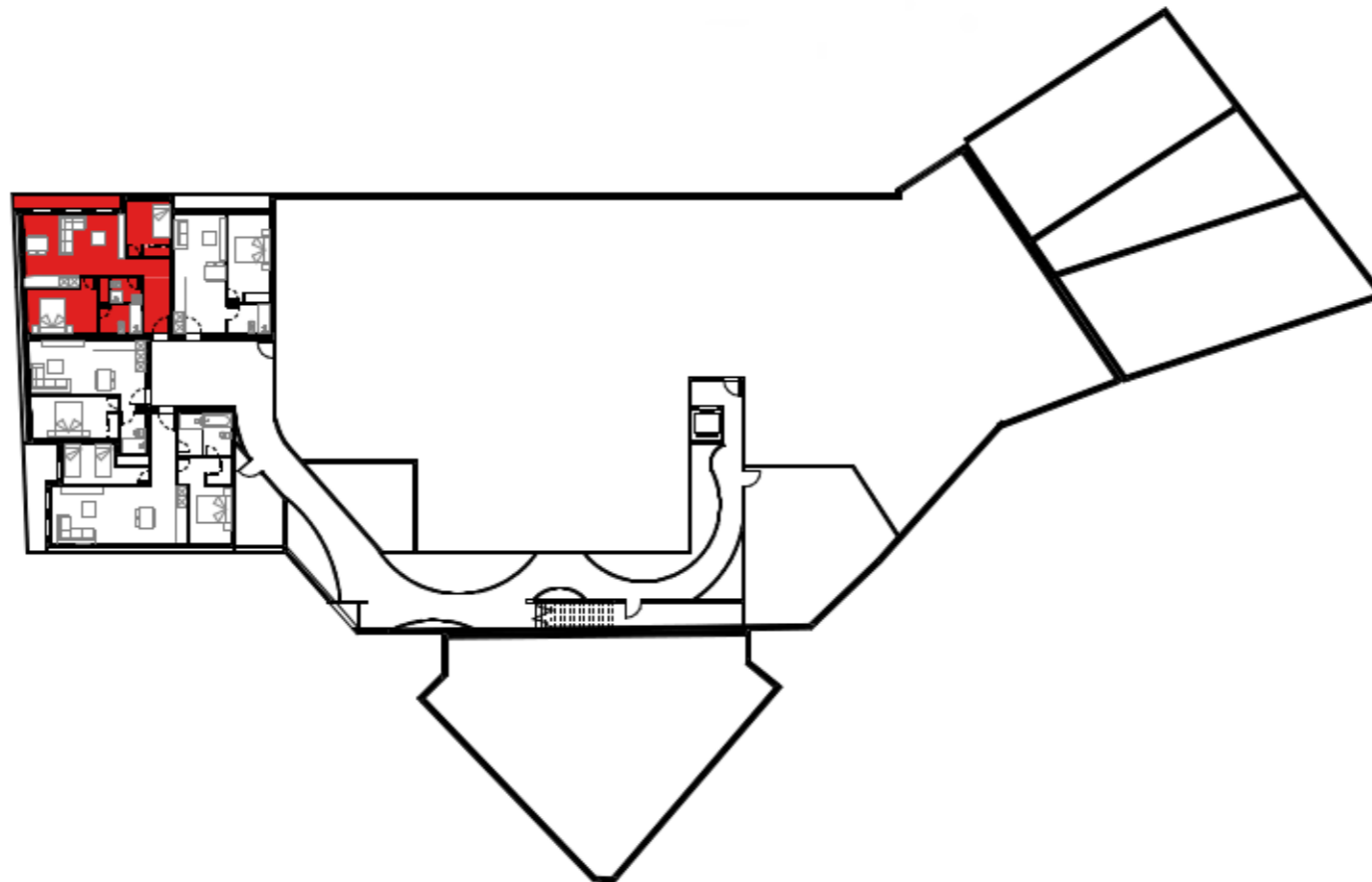
TOTAL CONSTRUIDA	76.28 m ²
------------------	----------------------

TOTAL CONSTRUIDA + TERRAZAS	81.88 m ²
-----------------------------	----------------------

SUPERFICIES ÚTILES

TOTAL ÚTIL	
------------	--

Salón- Cocina	26.14 m ²
Hall	4.80 m ²
Dormitorio Ppal	12.01 m ²
Dormitorio 2	8.23 m ²
Baño Ppal	4.00 m ²
Baño 2	2.68 m ²
Viv. Interior	57.86 m ²
Terraza	4.98 m ²
Viv. Exterior	4.98 m ²



*NOTA: